

Create a Custom Border

Before

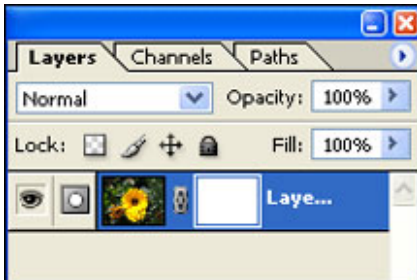


After



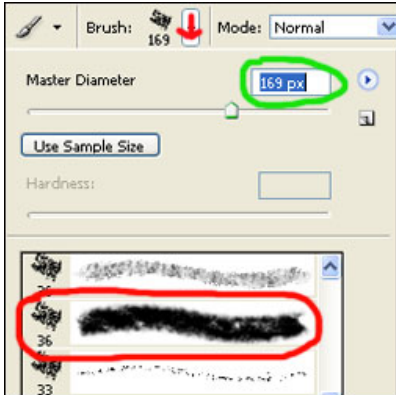
This tutorial is to help you learn how to create a custom border for any digital photo using masks.

1. Add Layer Mask to your background layer. Your Layer menu should then look something like the image below.



(If your background layer has a little lock sign on it you will have to make a duplicate layer before you can add the layer mask.)

2. Then select one of the more interesting paintbrushes like shown below.
3. And make sure it's a good size to work with the border.



4. Then with the color black selected paint where you want to erase out the new border.

You may have to paint over places multiple times in order to erase everything, but with practice you can create any kind of border you like.